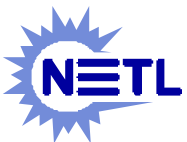


# **PUBLIC HEARINGS**

## **Gilberton Coal-to-Clean Fuels and Power Project Draft Environmental Impact Statement**

**U.S. Department of Energy  
National Energy Technology Laboratory**

**Shenandoah Valley High School – January 9, 2006  
D.H.H. Lengel Middle School – January 10, 2006**



# **Draft EIS for the Gilberton Coal-to-Clean Fuels and Power Project**

**Janice Bell**

**NEPA Document Manager**  
**Environment, Safety, and Health**  
**Division**

**Office of Institutional and**  
**Business Operations**  
**U.S. DOE/NETL**



# AGENDA

- WELCOME AND INTRODUCTIONS
- PURPOSE OF THE PUBLIC HEARING
- PROJECT OVERVIEW
- THE NATIONAL ENVIRONMENTAL POLICY ACT
- THE EIS PROCESS
- **YOUR COMMENTS!**
- ADJOURN



# MEETING PURPOSE

- **Why have a public hearing?**
  - Invite comments on the Draft EIS.
- **What do you need to know about commenting?**
  - Your comments and concerns are important.
  - All comments presented are being transcribed by a court reporter for the public record.
  - All comments received by February 8, 2006, will be considered in the preparing the Final EIS.



---

# **GILBERTON COAL-TO-CLEAN FUELS AND POWER PROJECT**

**Diane Revay Madden  
Project Manager  
Office of Major Demonstrations  
Advanced Energy Systems Division  
U.S. DOE/NETL**

# Clean Coal Power Initiative

- In FY02 U.S. Congress established the CCPI Program
- Congress indicated that the projects are to showcase technologies in which coal-fired power plants can continue to generate low cost electricity with improved efficiency and in compliance with more stringent environmental standards expected in the future.
- Government assists the project participant by sharing in the project's costs, but after successful demonstration of the technology the participant must repay the government's cost share.

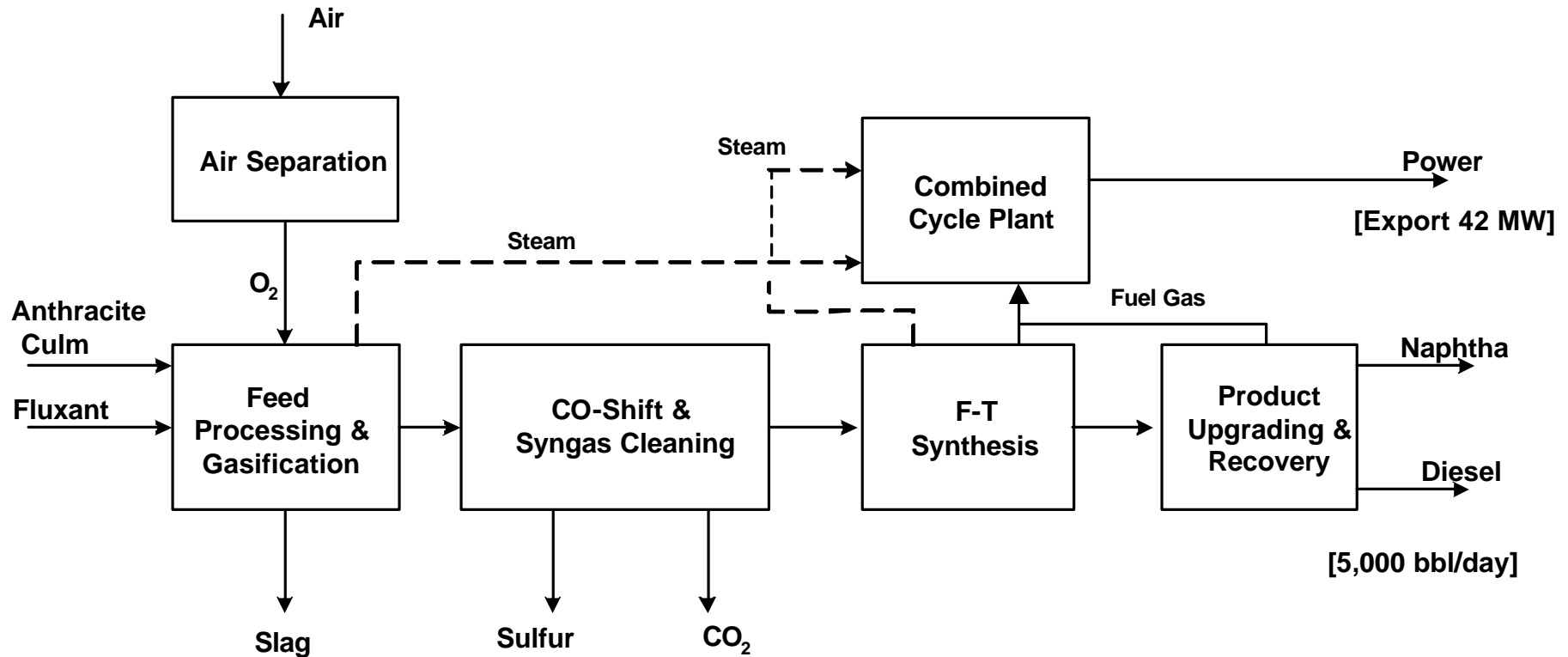
# **Gilberton Coal-to-Clean Fuels and Power Co-Production Project**

**Participant: WMPI PTY., LLC**

**Team Members:**

- Nexant, Inc.**
- Shell Global Solutions BV**
- Udhe GmbH**
- Sasol Technology Ltd**

# WMPI Coal Waste Gasification/Liquefaction Co-Production Project



# OVERVIEW OF NEPA PROCESS

- **NATIONAL ENVIRONMENTAL POLICY ACT**  
U. S. Federal Law – effective January 1970
- **Applies to all Federal agencies**
- **National charter for protection of the environment**
- **Mandate:**  
Environmental information must be available to public officials and citizens before Federal decisions are made and before Federal actions are taken.



# NEPA OBJECTIVES

- **Make decisions based on an understanding of environmental consequences.**
- **Take actions that protect, restore, and enhance the environment.**
- **Focus on truly significant issues.**
- **Promote better environmental planning and better decision making.**



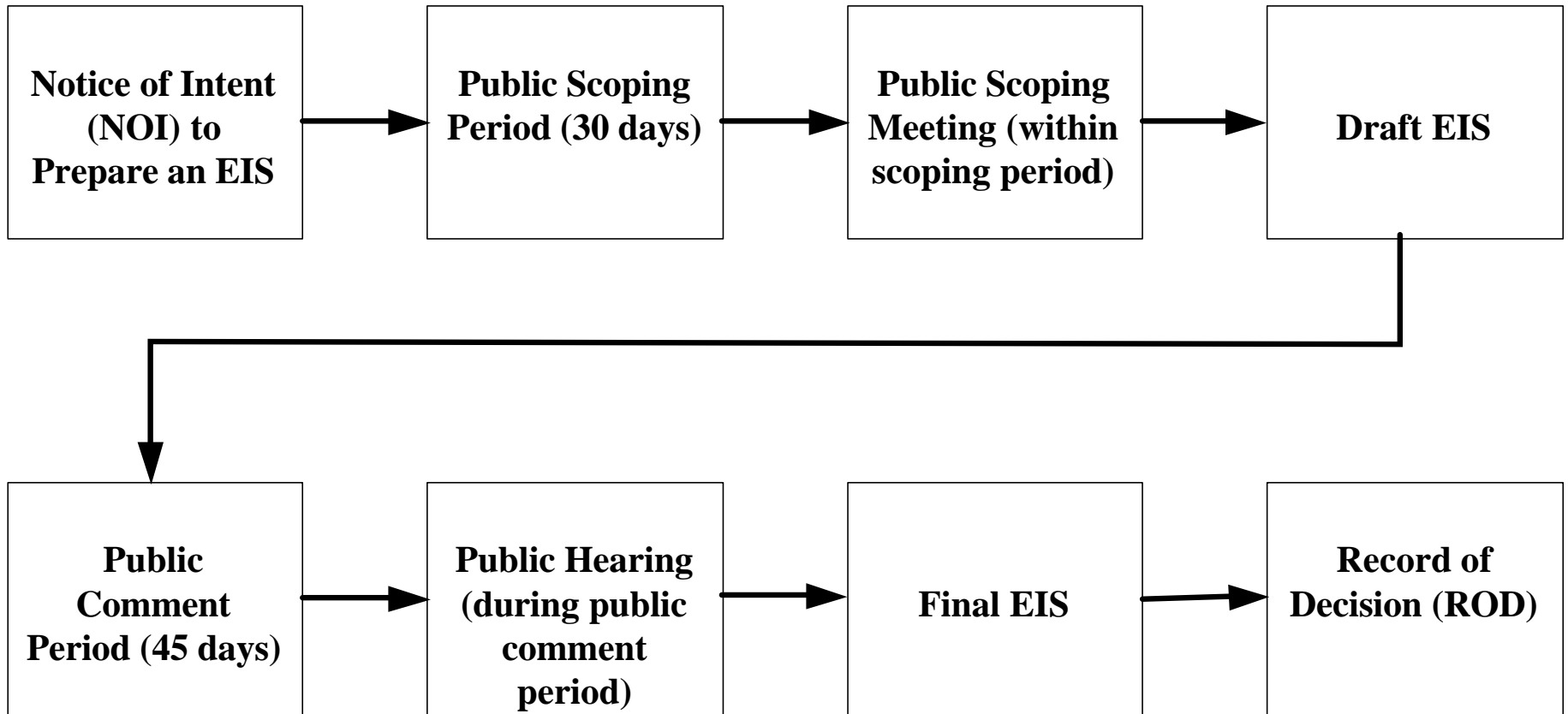
# ENVIRONMENTAL IMPACT STATEMENT

## Required Contents 40 CFR 1502.10

- Cover sheet, summary, and table of contents
- Statement of purpose and need for Agency action
- Examination of reasonable alternatives
- Characteristics of the affected environment
- Environmental consequences of the proposed action and alternatives
- List of agencies, organizations, persons to whom the document is sent
- List of preparers and an index



# ENVIRONMENTAL IMPACT STATEMENT PROCESS



# LOGISTICS FOR ORAL COMMENTS

- **5 minutes per speaker, please!**
- An additional opportunity to speak at the end, if time allows.
- Pre-registered speakers first.
- Transcript will be prepared.
- State your name and spell it before beginning to comment.
- Additional comment cards are available, if you prefer to mail in comments.



# Recap of EIS Review Process

- **DOE conducts a public hearing to solicit comments on the DEIS.**
- **Federal, state, and local agencies, as well as local citizens and stakeholders review and comment on the DEIS.**
- **DOE collects and responds to all comments received or postmarked by February 8, 2006.**
- **DOE prepares Final EIS and a Record of Decision, based on comments received.**
- **Assistant Secretary for Fossil Energy signs the Record of Decision.**



# DUE DATE FOR COMMENTS

- Comments must be postmarked or received by February 8, 2006.

Janice Bell

U.S. DOE/NETL

MS/58-247A

P.O. Box 10940

Pittsburgh, PA 15236

Fax: 412-386-4806

1-866-576-8240 (toll-free)

[jbelle@netl.doe.gov](mailto:jbelle@netl.doe.gov)



---

# ADJOURN

